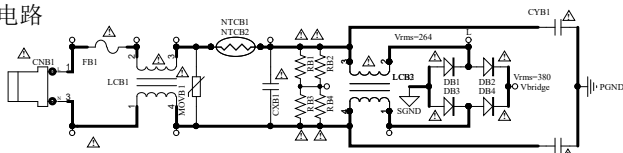
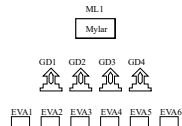


配置规格：功率75W，恒流电压66-94V
(若需要其它规格请修改相应橘色物料)

EMI电路



辅料及结构件等



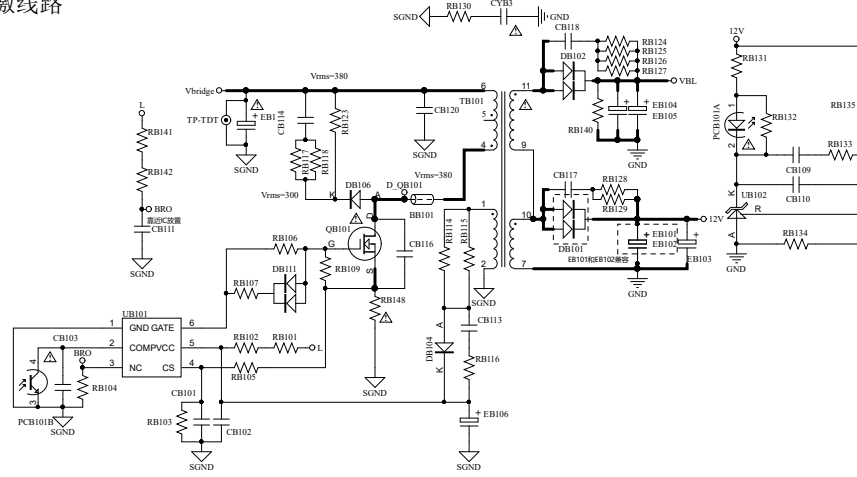
Layout Note:

1. 预制的防火泡棉位置应同时满足半包和全包要求，选用时注意修300M

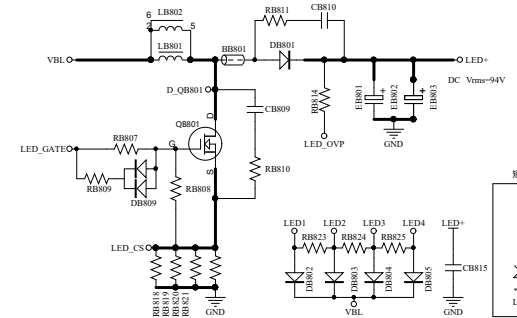
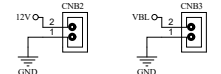
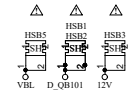
原理图中未体现的辅料及特殊生产工艺

工艺	位号
背板点胶	EB1、EB803(M)
XXX	XXX
XXX	XXX
XXX	XXX

反激线路



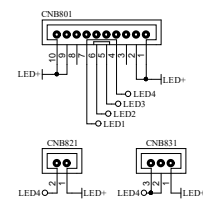
GL1 EB1底部



A1.0

与TV端连接网络

背光插座

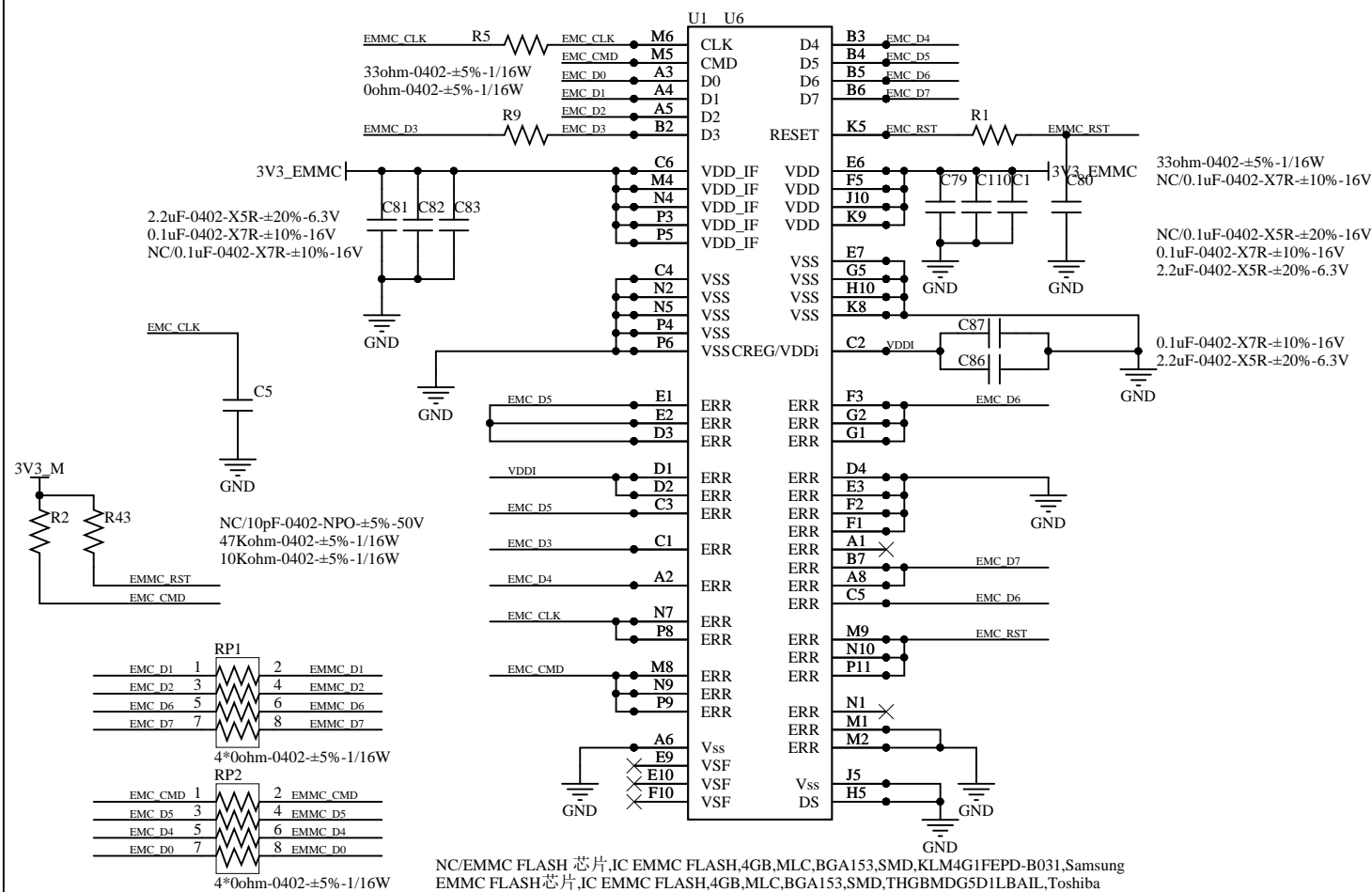
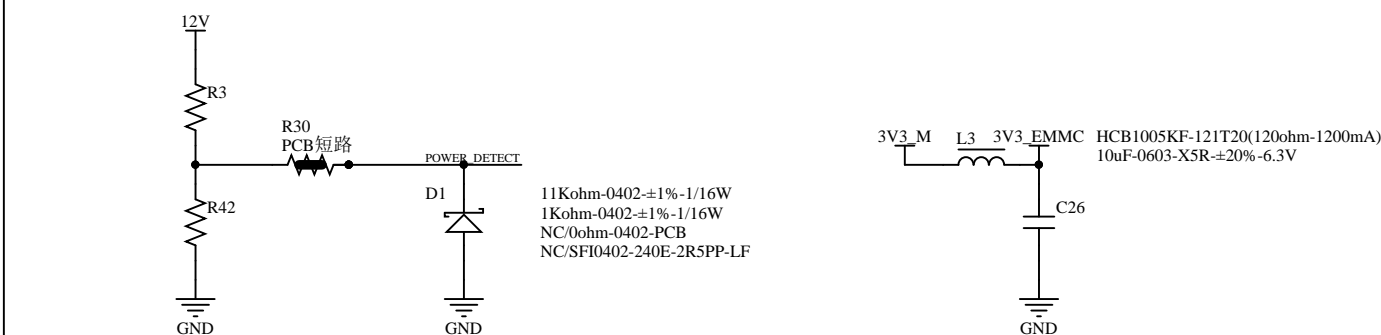


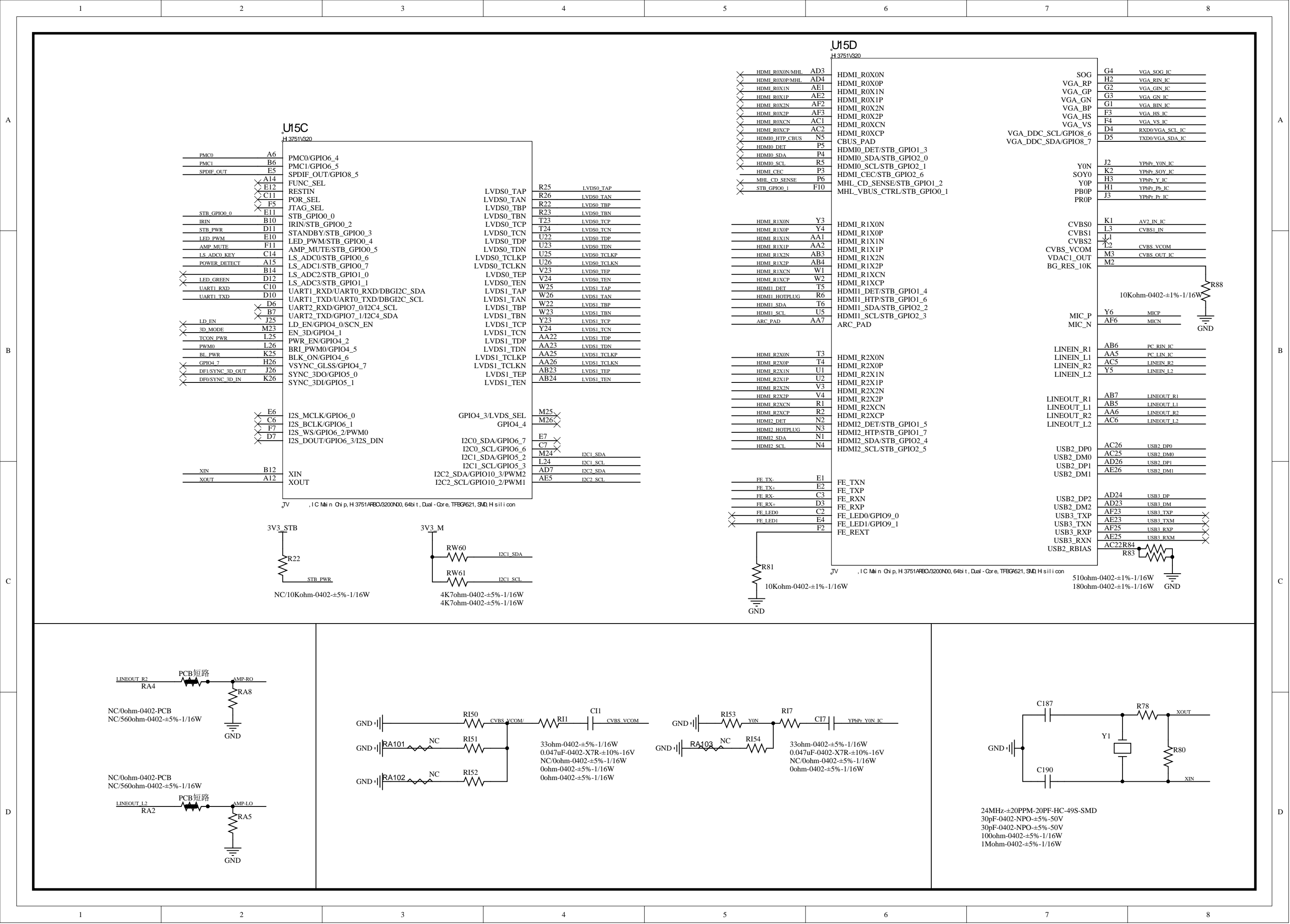
辅料及结构件等

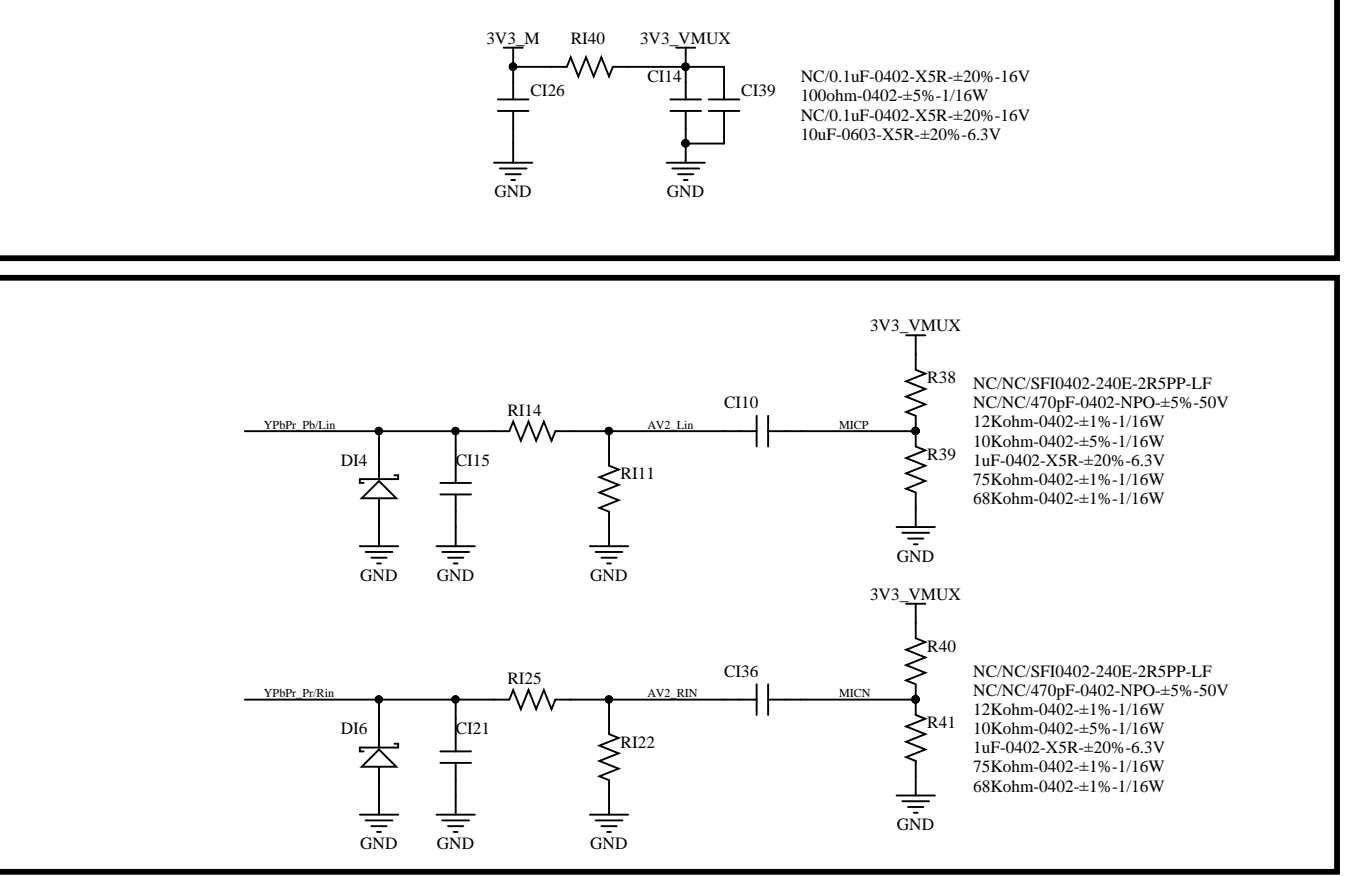
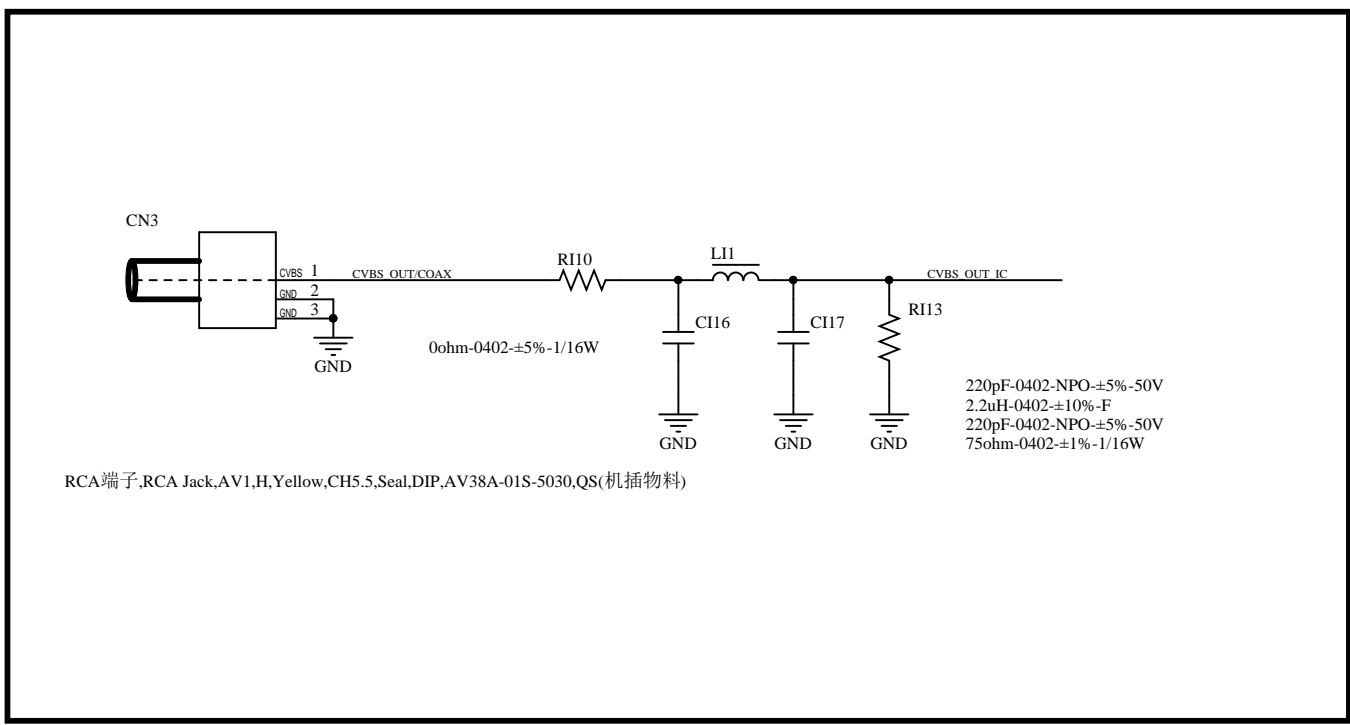
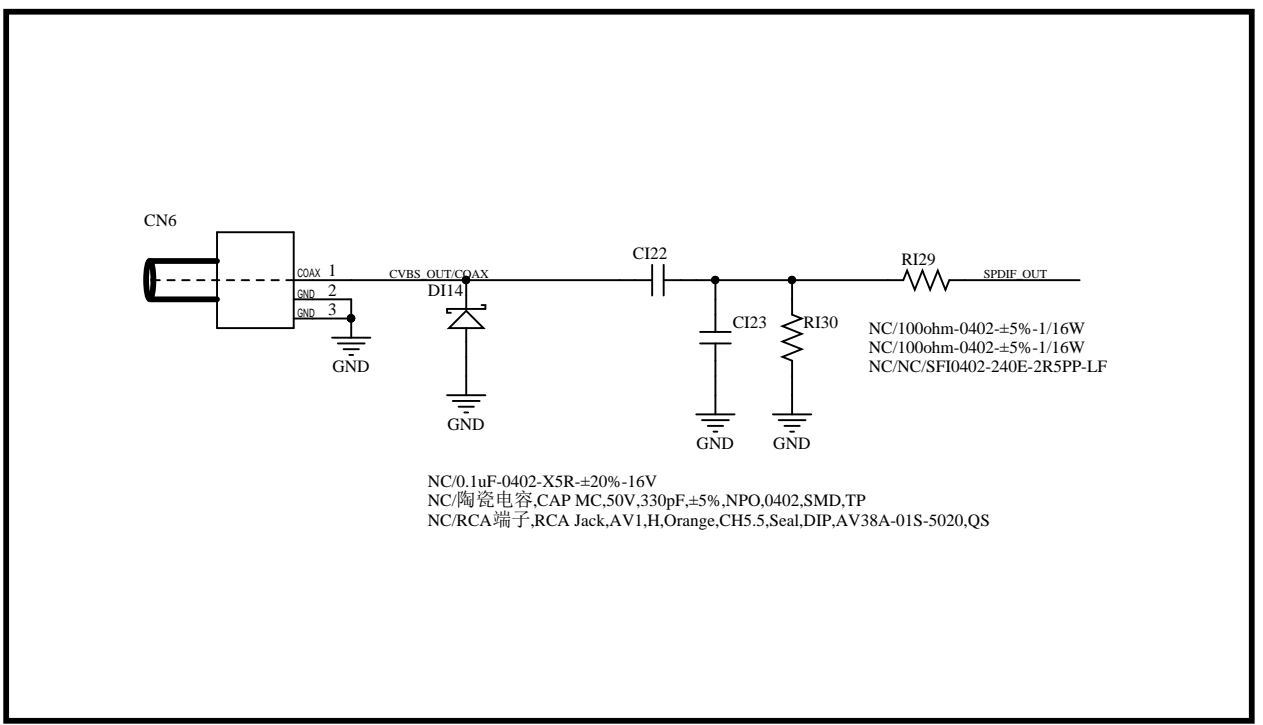
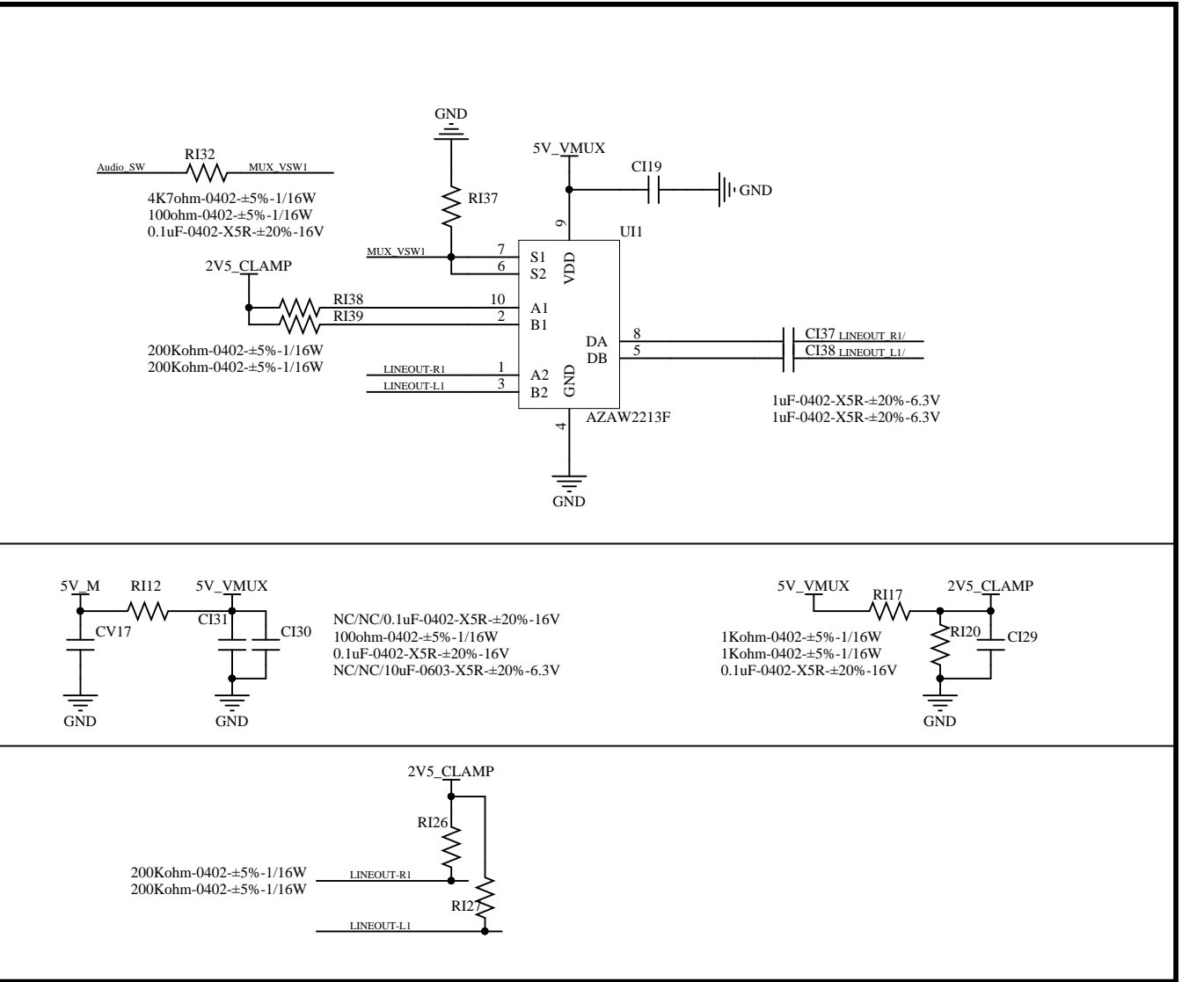
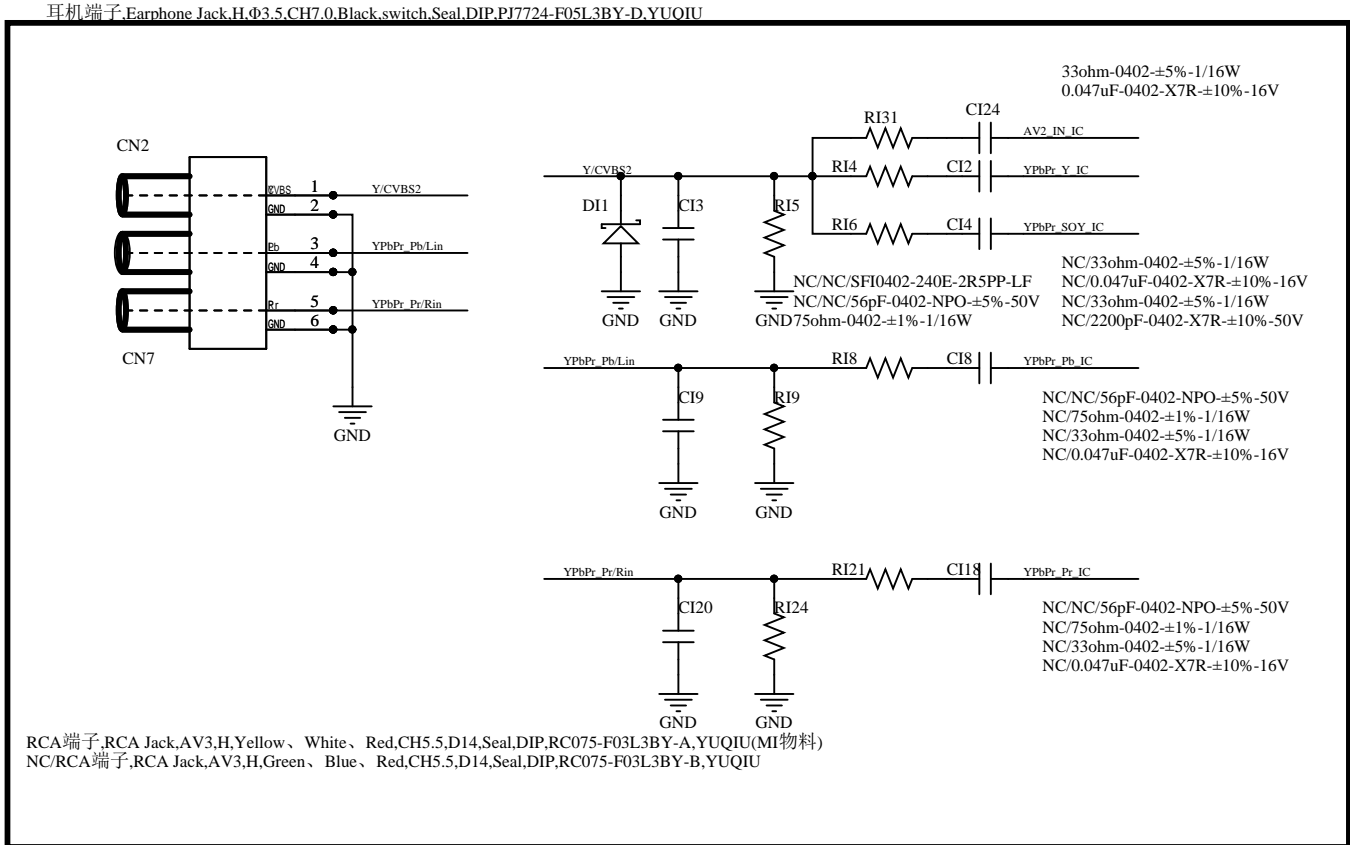
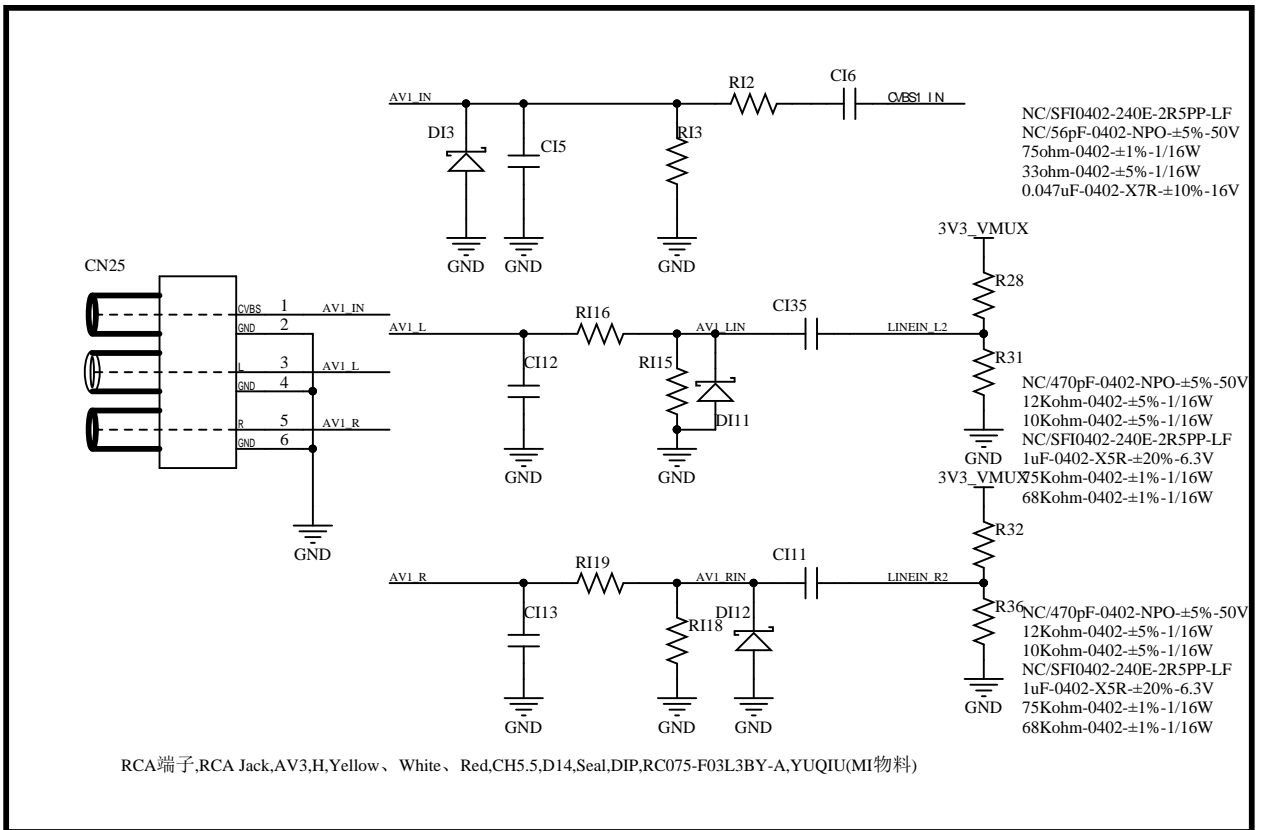
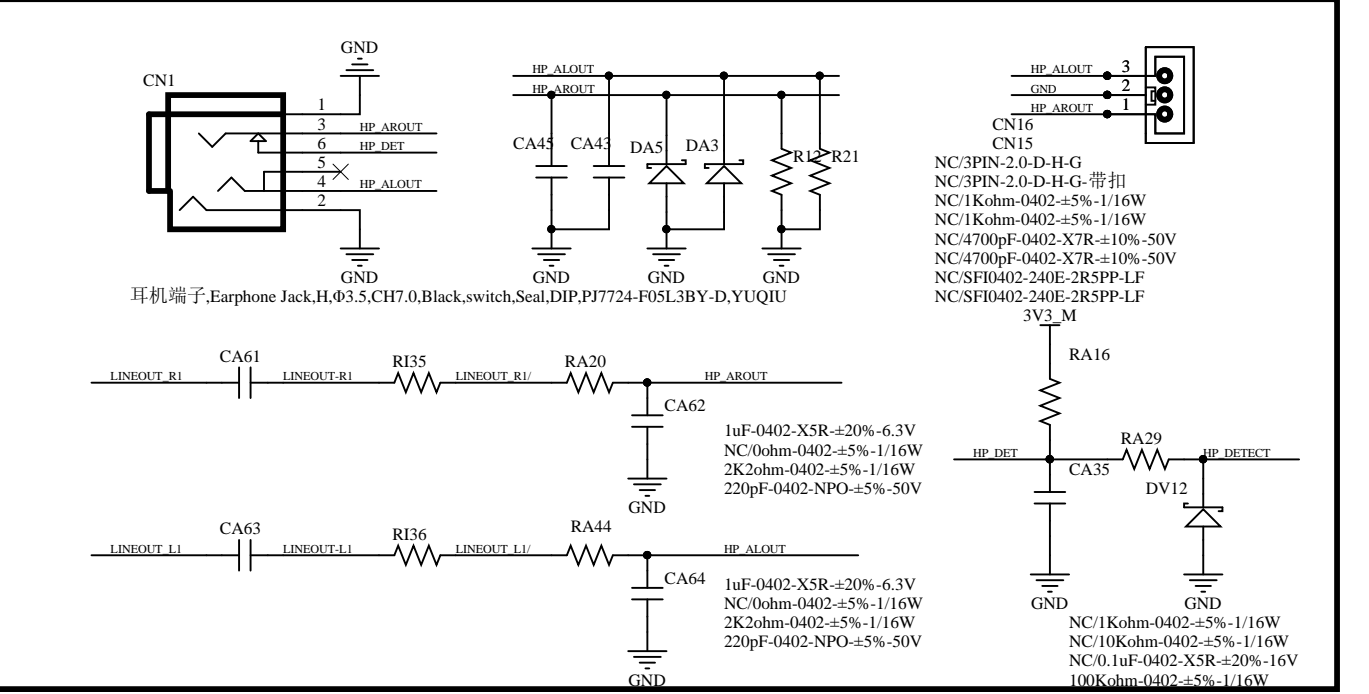
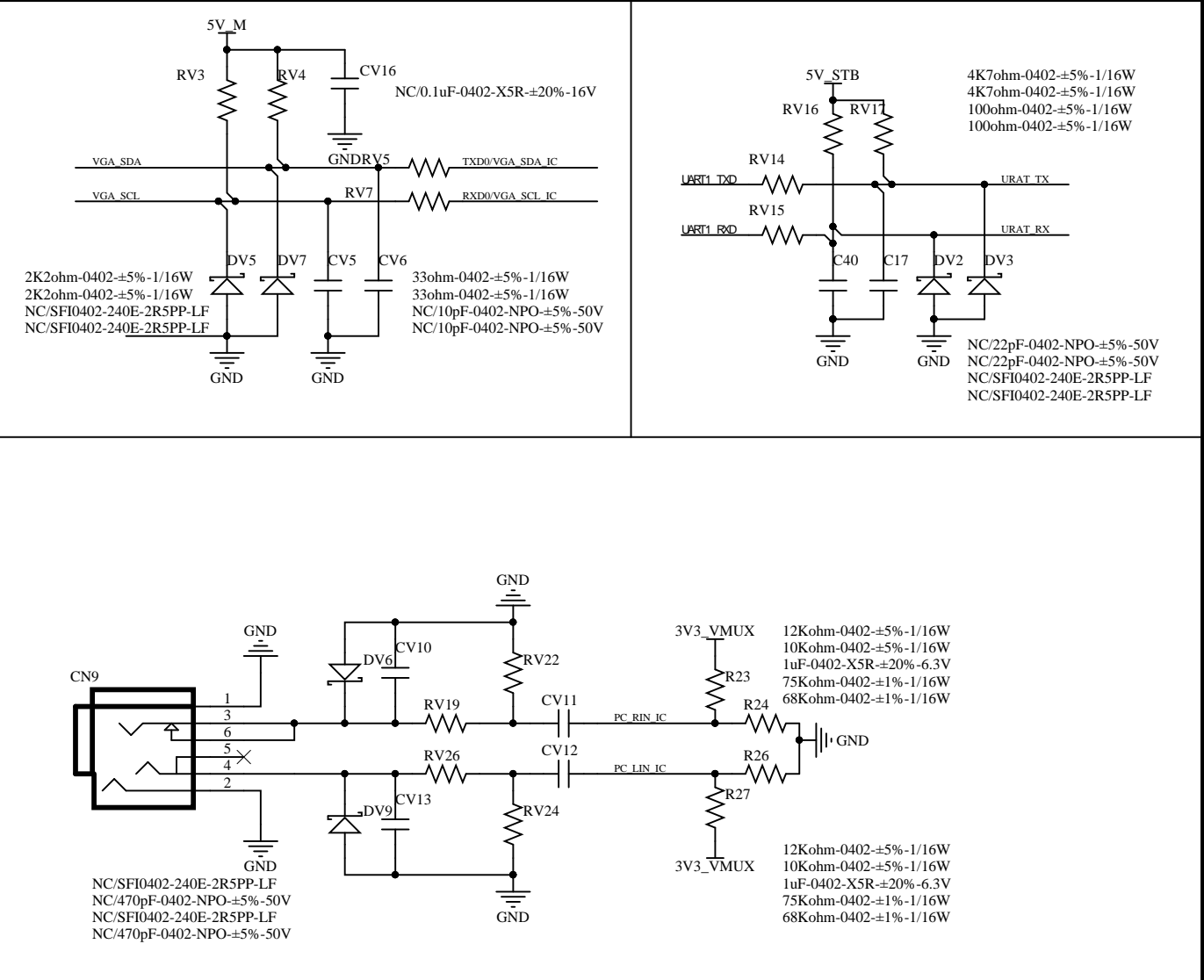
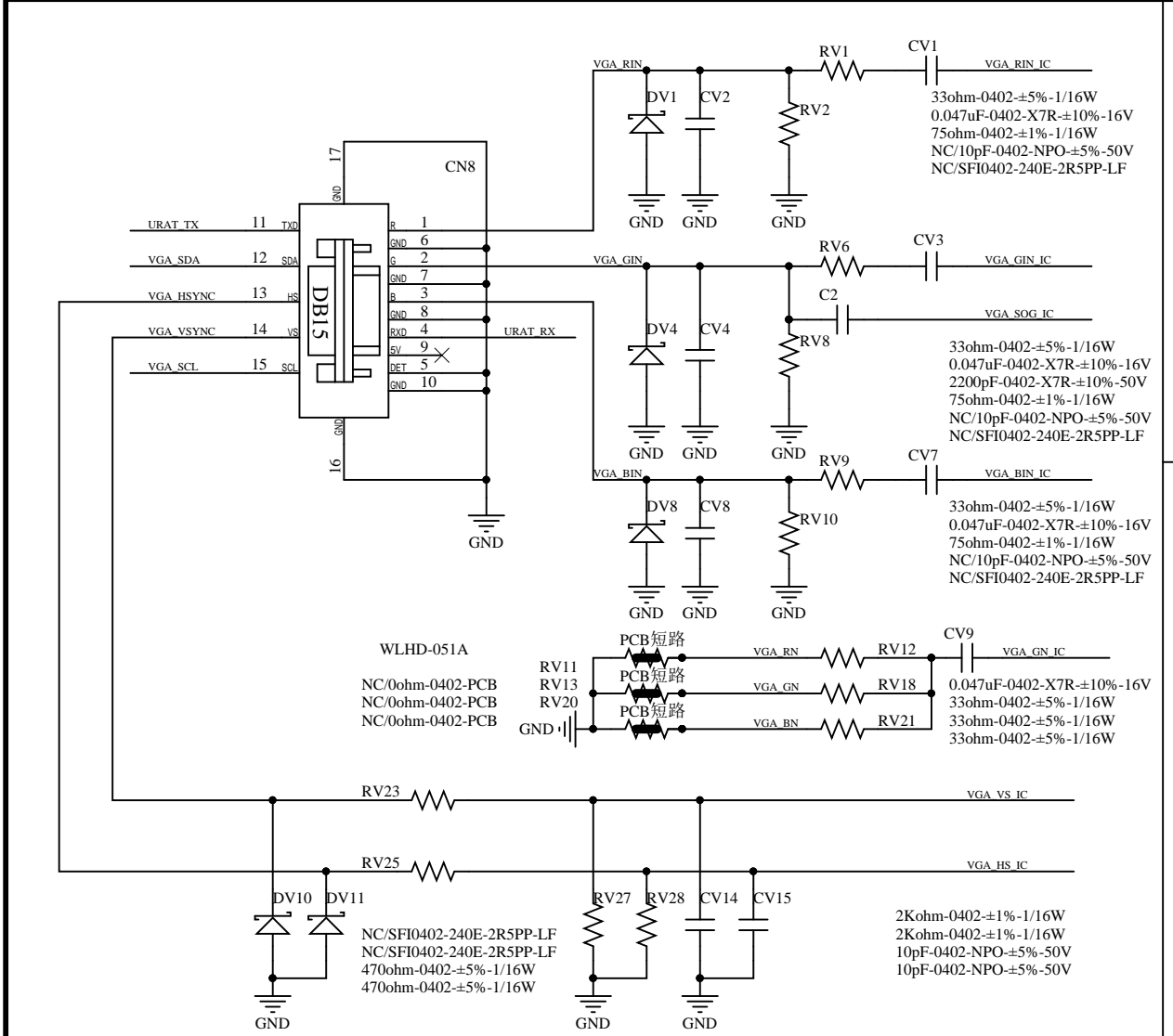


Model Name:	TFPRV526.PBT52	VERSION:	V1.0
DRAWN:	注册	DATE:	2017-04-18
CHKD:	爱德荣	DATE:	2017-04-19

CVTE
Dream Future







A

B

C

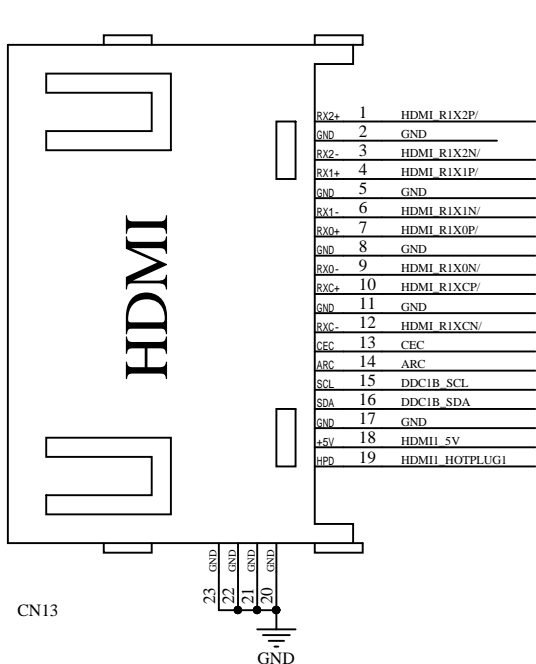
D

A

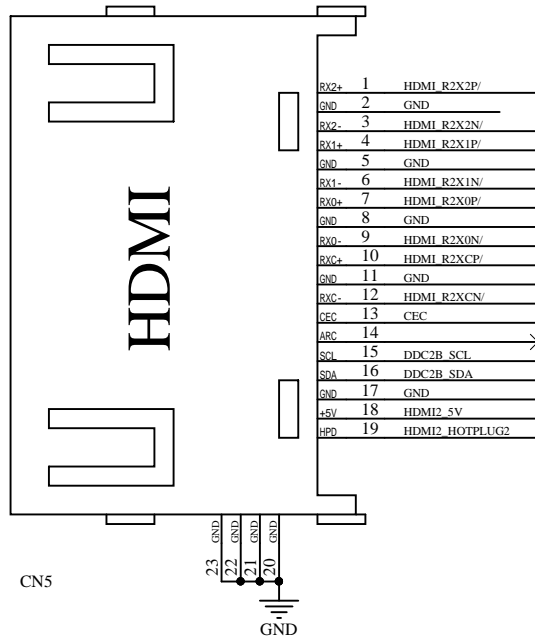
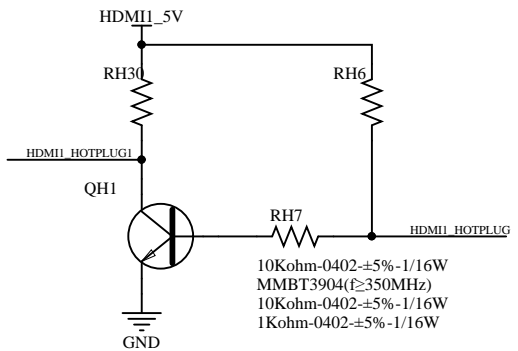
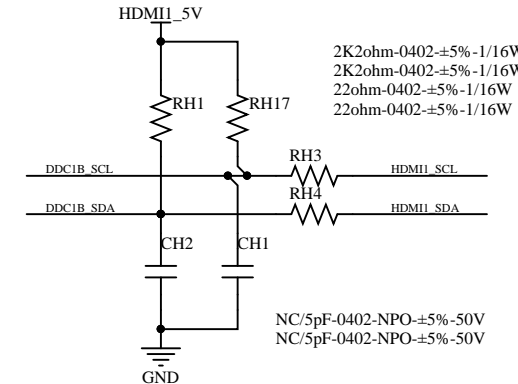
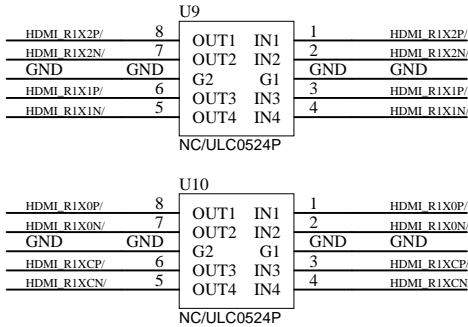
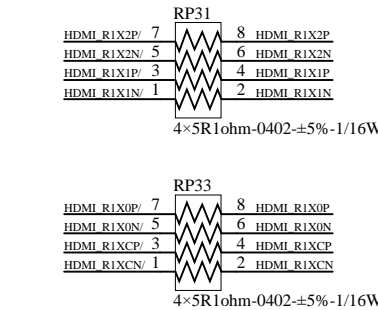
B

C

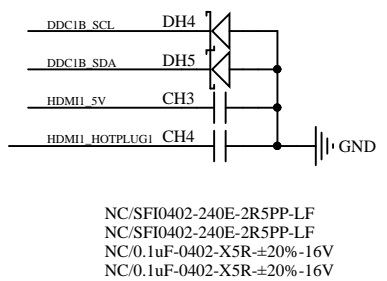
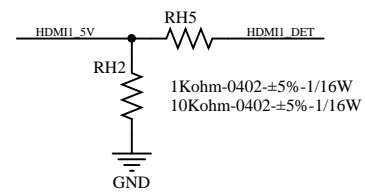
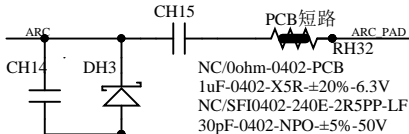
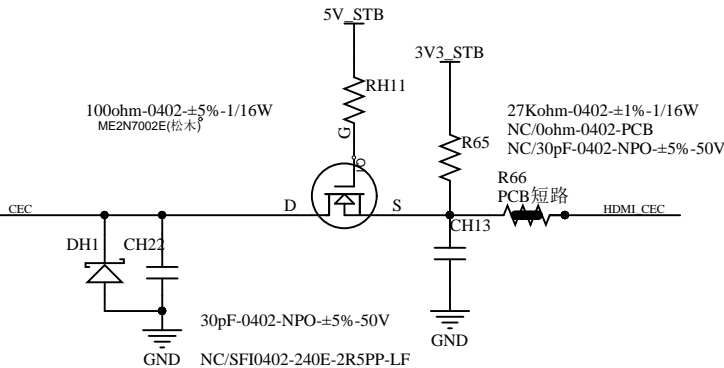
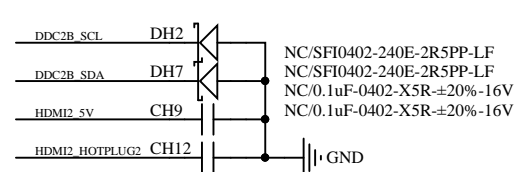
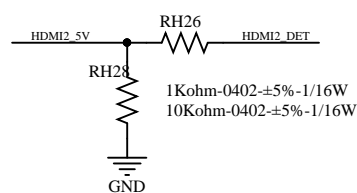
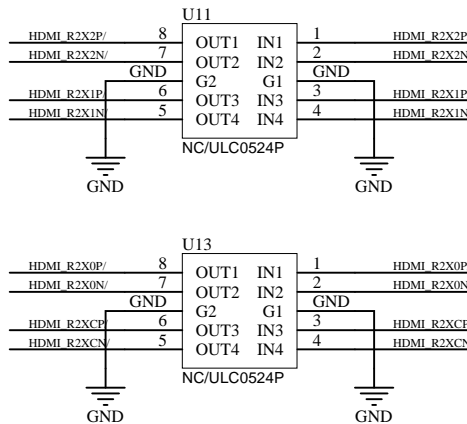
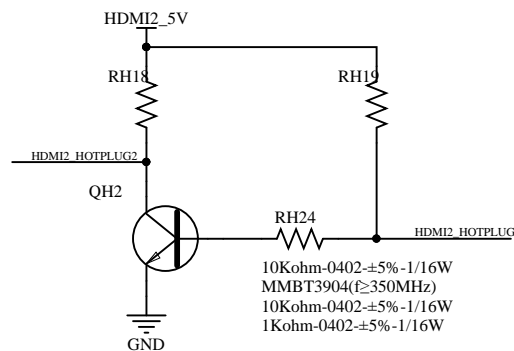
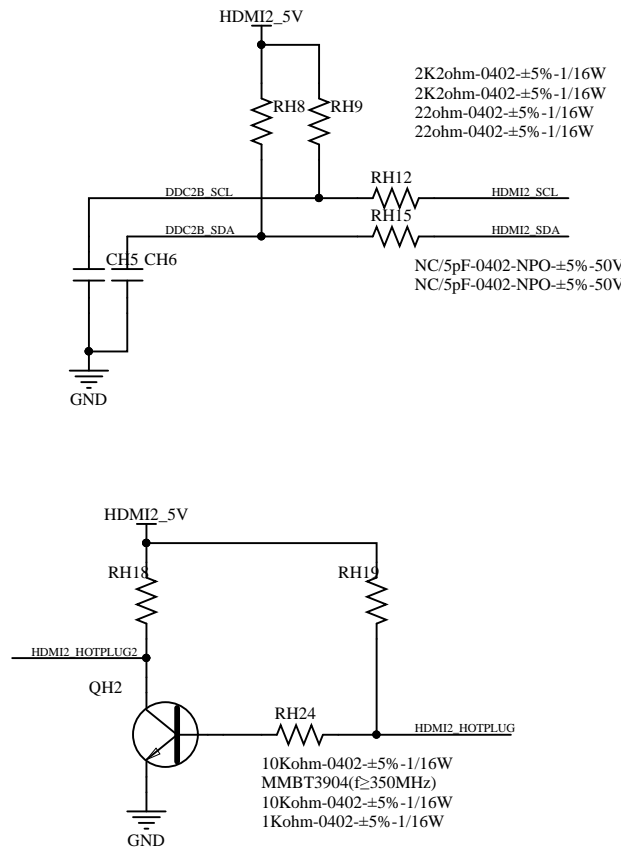
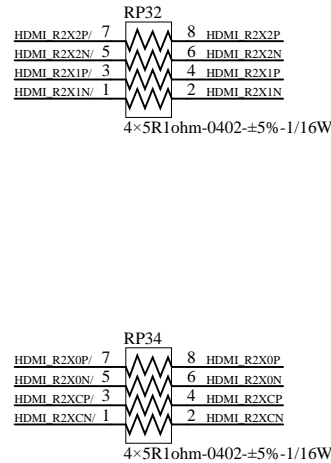
D

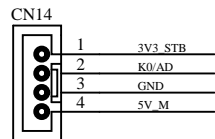


HDMI端子,HDMI Jack,H,SMD,161031041(hull-SPCC),VAST

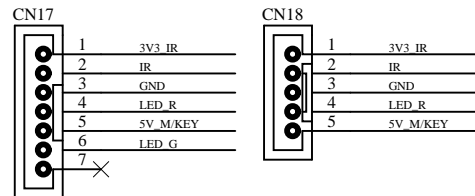


HDMI端子,HDMI Jack,H,SMD,161031041(hull-SPCC),VAST

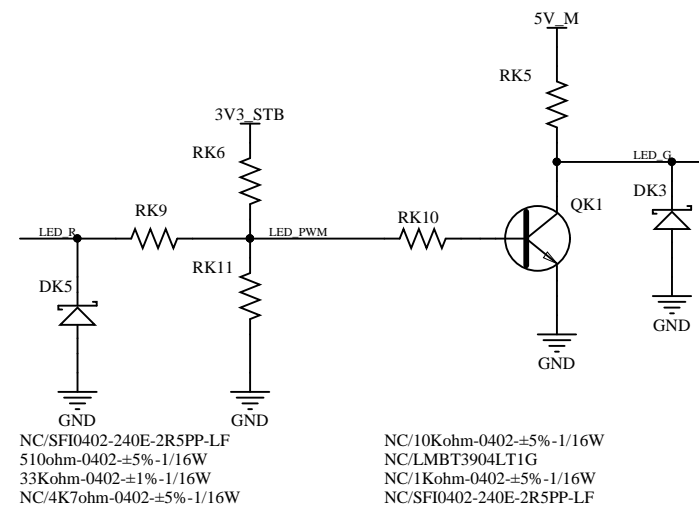
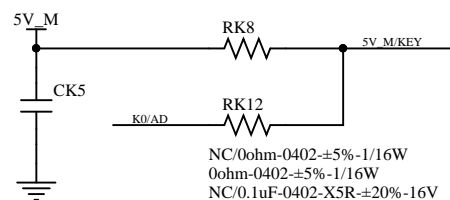
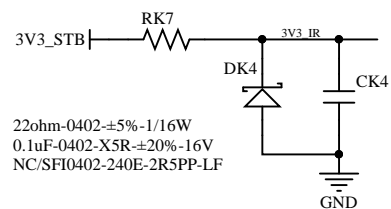
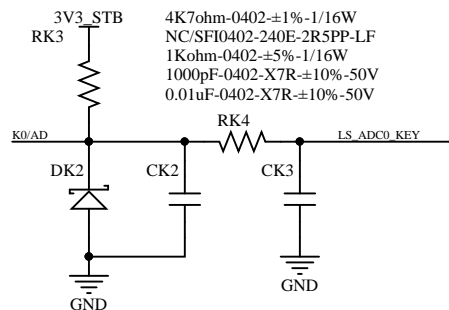
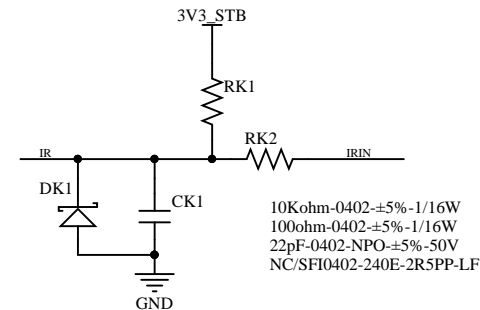


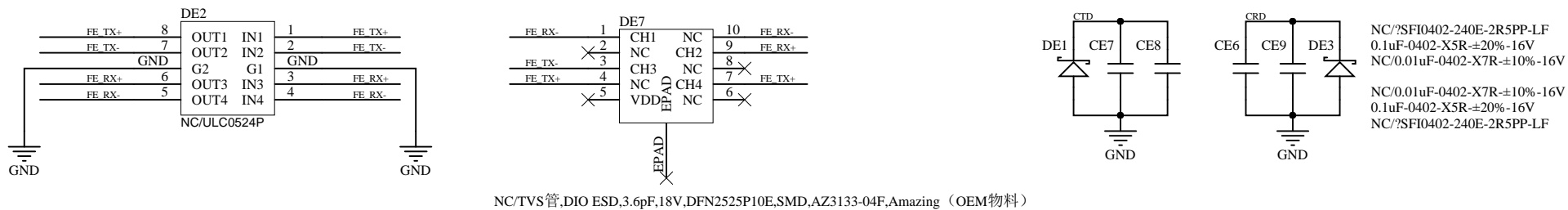
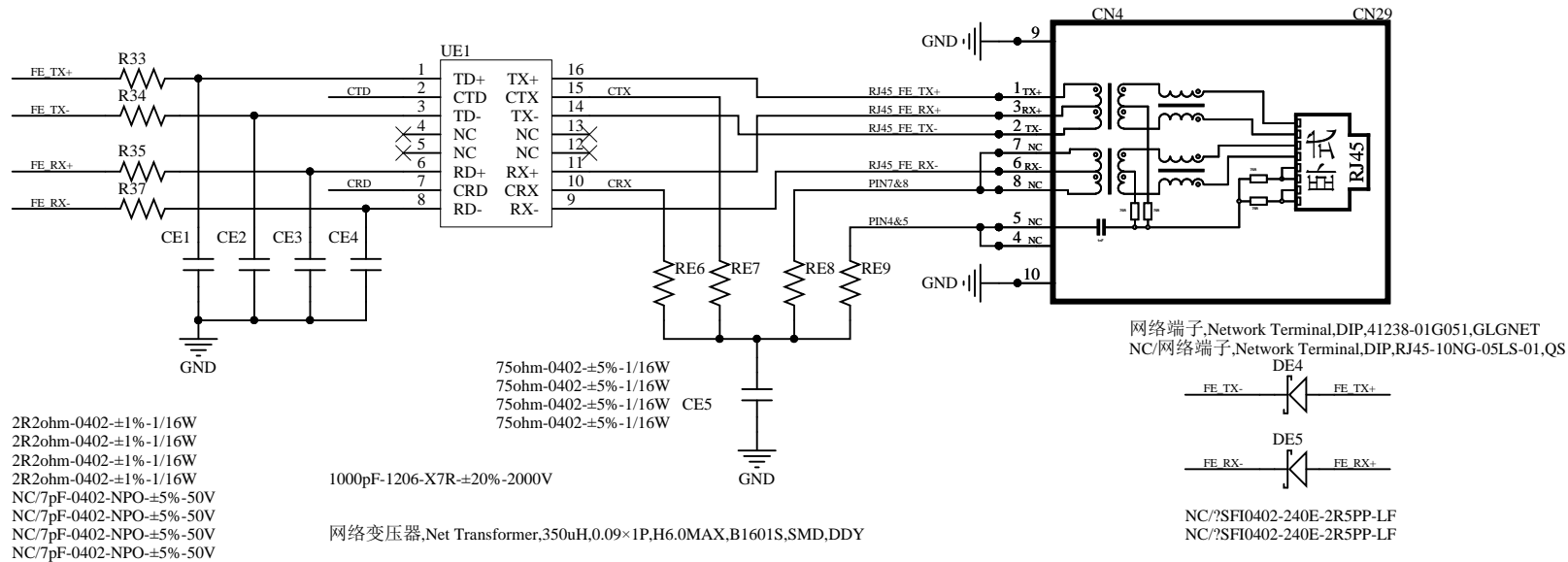


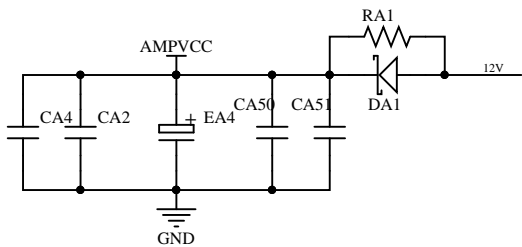
连接插座,connect jack,4Pin,D2.0,D,SNAP,Nature,L=2.8mm,DIP,AMA



连接插座,connect jack,5Pin,D2.0,D,SNAP,Nature,L=2.8mm,DIP,AMA
NC/连接插座,connect jack,7Pin,D2.0,D,SNAP,Nature,L=2.8mm,DIP,AMA

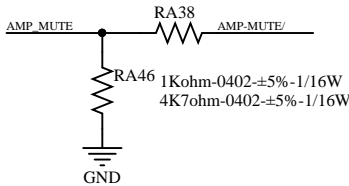




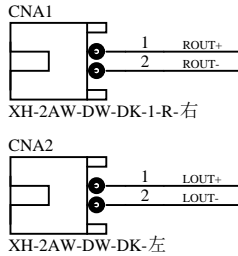
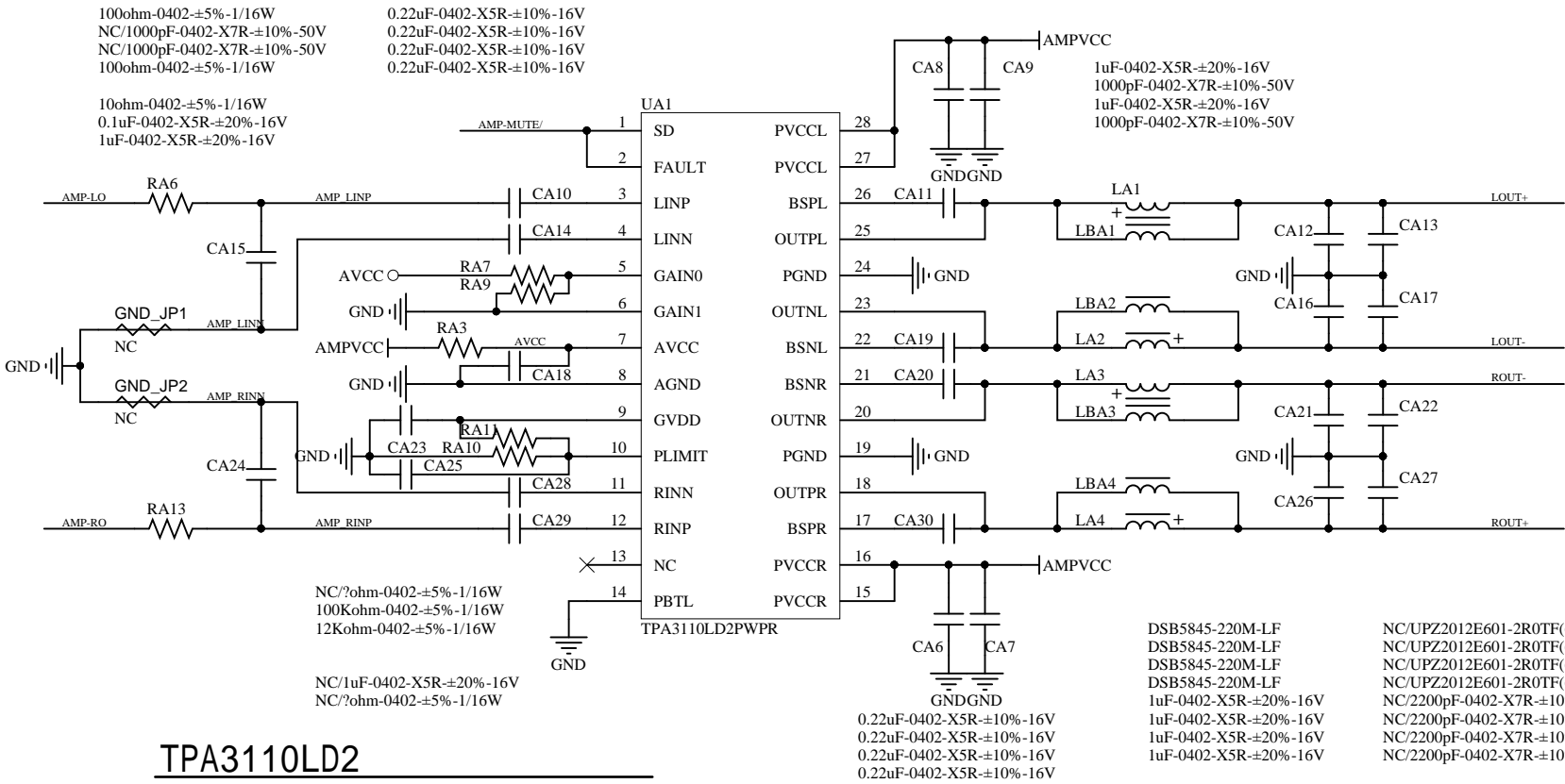


1uF-0603-X5R-±10%-25V
1uF-0603-X5R-±10%-25V
470uF-25V-±20%-10×12.5-105℃-GF-编带-F=5.0(CapXon)
10uF-0805-X5R-±20%-16V
10uF-0805-X5R-±20%-16V

0ohm-1206-±5%-1/4W
NC/SK34A-SMA-F



AMP MUTE
L: MUTE | H: Normal



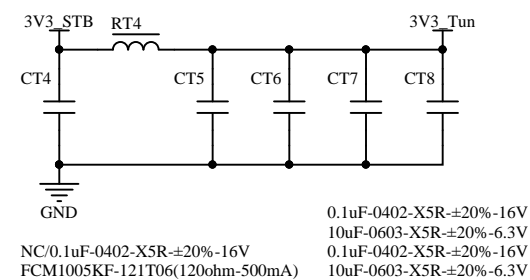
TPA3110LD2
GAIN: 26dB
Input Impedance: 30Kohm

GAIN1	GAIN0	AMPLIFIER GAIN (dB)	INPUT IMPEDANCE (kΩ)
		TYP	TYP
0	0	20	60
0	1	26	30
1	0	32	15
1	1	36	9

Test Conditions	PLIMIT Voltage	Output Power (W)	Output Voltage Amplitude (V _{p-p})
PVCC=24V, Vin=1Vrms, R _L =8Ω, Gain=26dB	6.97	36.1 (thermally limited)	43
PVCC=24V, Vin=1Vrms, R _L =8Ω, Gain=26dB	2.94	15 (thermally limited)	25.2
PVCC=24V, Vin=1Vrms, R _L =8Ω, Gain=26dB	2.34	10	20
PVCC=24V, Vin=1Vrms, R _L =8Ω, Gain=26dB	1.62	5	14
PVCC=24V, Vin=1Vrms, R _L =8Ω, Gain=20dB	6.97	12.1 (thermally limited)	27.7
PVCC=24V, Vin=1Vrms, R _L =8Ω, Gain=20dB	3.00	10	23
PVCC=24V, Vin=1Vrms, R _L =8Ω, Gain=20dB	1.86	5	14.8
PVCC=12V, Vin=1Vrms, R _L =8Ω, Gain=20dB	6.97	10.55 (thermally limited)	23.5
PVCC=12V, Vin=1Vrms, R _L =8Ω, Gain=20dB	1.76	5	15

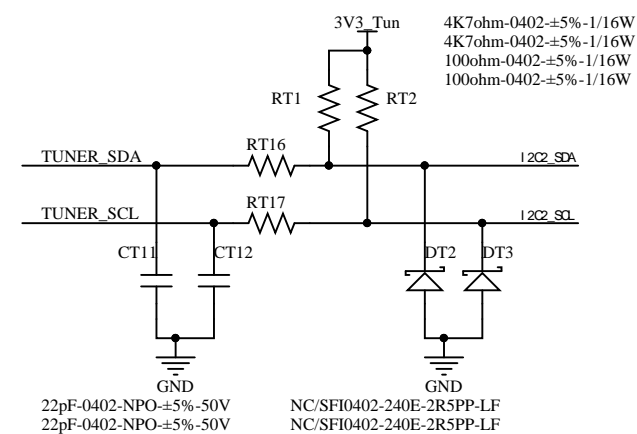
A

A



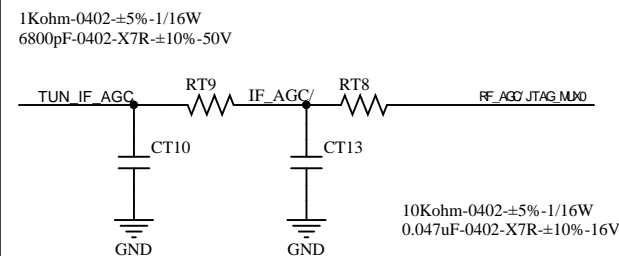
B

B



C

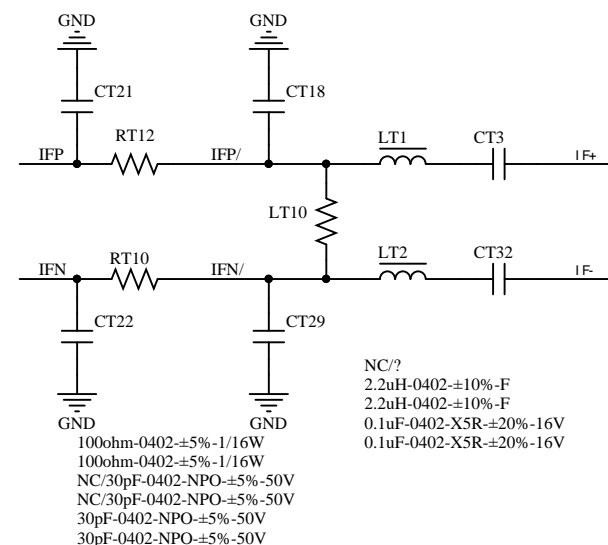
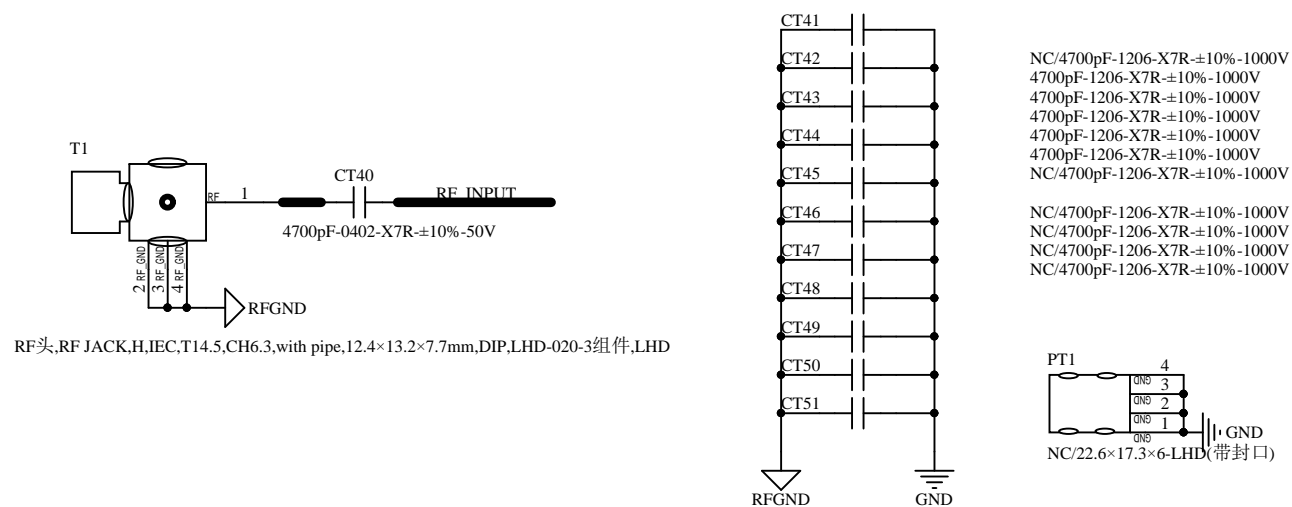
C

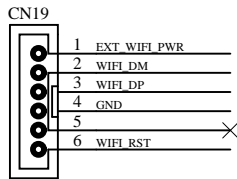


硅高频头, IC Si Tuner, QFN-24, SMD, SI2159-A10-GMR, Silicon Labs

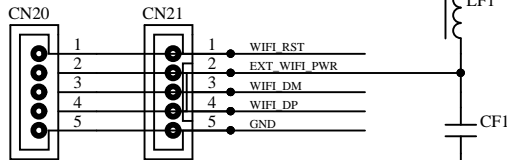
D

D

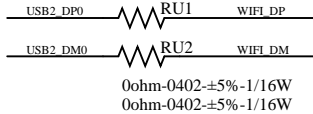




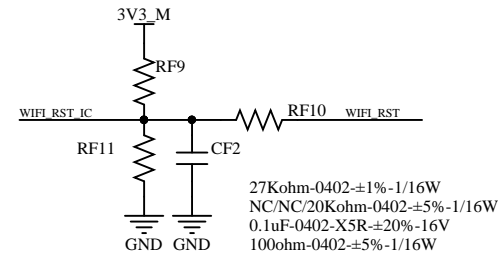
连接插座,connect jack,6Pin,D2.0,D,SNAP,Nature,L=2.8mm,DIP,AMA



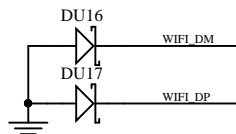
NC/SPIN-2.0-D-H-G
NC/SPIN-2.0-D-H-G-带扣
HCB1005KF-121T20(120ohm-1200mA)
10uF-0603-X5R±20%-6.3V



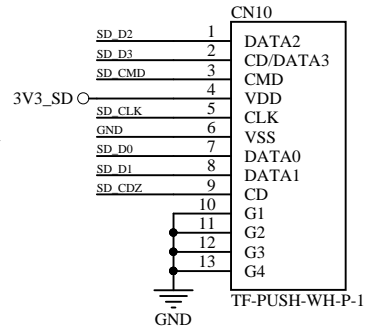
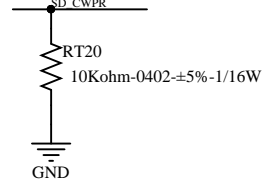
0ohm-0402±5%-1/16W
0ohm-0402±5%-1/16W



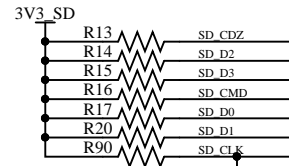
27Kohm-0402±1%-1/16W
NC/NC/20Kohm-0402±5%-1/16W
0.1uF-0402-X5R±20%-16V
100ohm-0402±5%-1/16W



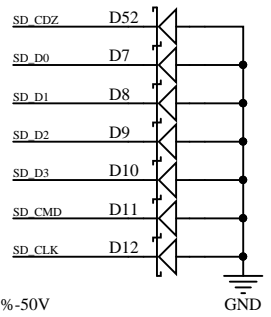
NC/ULCE0505A015FR
NC/ULCE0505A015FR



TF-PUSH-WH-P-1

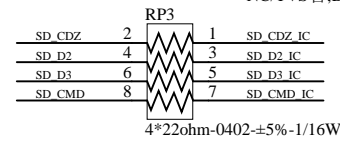


4K7ohm-0402±5%-1/16W
NC/47Kohm-0402±5%-1/16W
NC/47Kohm-0402±5%-1/16W
47Kohm-0402±5%-1/16W
NC/47Kohm-0402±5%-1/16W
NC/47Kohm-0402±5%-1/16W
NC/47Kohm-0402±5%-1/16W

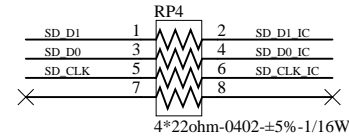


NC/5pF-0402-NPO±5%-50V

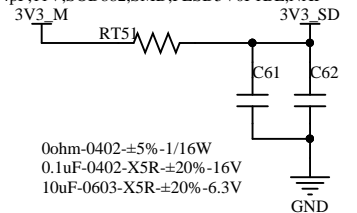
NC/TVS管,DIO ESD,0.4pF,11V,SOD882,SMD,PESD5V0F1BL,NXP
NC/TVS管,DIO ESD,0.4pF,11V,SOD882,SMD,PESD5V0F1BL,NXP
NC/TVS管,DIO ESD,0.4pF,11V,SOD882,SMD,PESD5V0F1BL,NXP
NC/TVS管,DIO ESD,0.4pF,11V,SOD882,SMD,PESD5V0F1BL,NXP
NC/TVS管,DIO ESD,0.4pF,11V,SOD882,SMD,PESD5V0F1BL,NXP
NC/TVS管,DIO ESD,0.4pF,11V,SOD882,SMD,PESD5V0F1BL,NXP
NC/TVS管,DIO ESD,0.4pF,11V,SOD882,SMD,PESD5V0F1BL,NXP



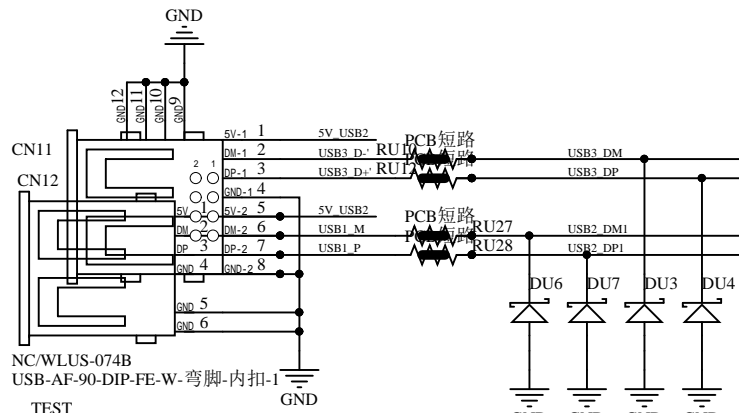
4*22ohm-0402±5%-1/16W



4*22ohm-0402±5%-1/16W



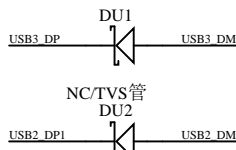
0ohm-0402±5%-1/16W
0.1uF-0402-X5R±20%-16V
10uF-0603-X5R±20%-6.3V



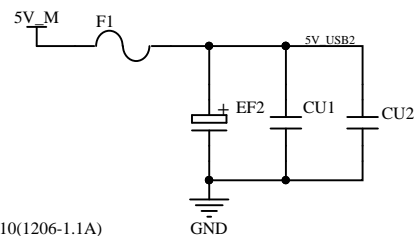
NC/WLUS-074B
USB-AF-90-DIP-FE-W-弯脚-内扣-1

TEST USB1_M
DM1
TEST USB1_P
DP1
TEST USB3_D-
DP3
TEST USB3_D+
DM3

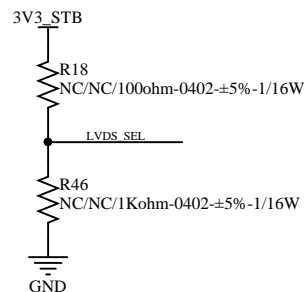
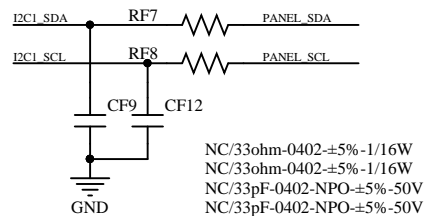
NC/0ohm-0402-PCB
NC/0ohm-0402-PCB
NC/0ohm-0402-PCB
NC/0ohm-0402-PCB
NC/ULCE0505A015FR
NC/ULCE0505A015FR
NC/ULCE0505A015FR
NC/ULCE0505A015FR



























NC/TVS管



NSMD110(1206-1.1A)
10uF-0603-X5R±20%-6.3V
0.1uF-0402-X5R±20%-16V
NC/100uF-NC/16V±20%-5×11-105℃-黑底白字-编带-F=2.5-XF



TEST		RX00-/	LVDS0_TAN
TEST		RX00+/	LVDS0_TAP
TEST		RX01-/	LVDS0_TBN
TEST		RX01+/	LVDS0_TBP
TEST		RX02-/	LVDS0_TCN
TEST		RX02+/	LVDS0_TCP
TEST		RX0C-/	LVDS0_TCLCN
TEST		RX0C+/	LVDS0_TCLCP
TEST		RX03-/	LVDS0_TDN
TEST		RX03+/	LVDS0_TDP
TEST		RX04-/	LVDS0_TDP
TEST		RX04+/	LVDS0_TEP
TEST		RXE0-/	LVDS1_TAN
TEST		RXE0+/	LVDS1_TAP
TEST		RXE1-/	LVDS1_TBN
TEST		RXE1+/	LVDS1_TBP
TEST		RXE2-/	LVDS1_TCN
TEST		RXE2+/	LVDS1_TCP
TEST		RXEC-/	LVDS1_TCLCN
TEST		RXEC+/	LVDS1_TCLCP
TEST		RXE3-/	LVDS1_TDN
TEST		RXE3+/	LVDS1_TDP
TEST		RXE4-/	LVDS1_TEN
TEST		RXE4+/	LVDS1_TEP
TEST		VCC_PANEL	VCC_PANEL

